



MONTHLY MEMBERSHIP PROGRESS REPORT

District 33 S

Results as of: 09/30/2018

GMT: MAHESH CHITNIS

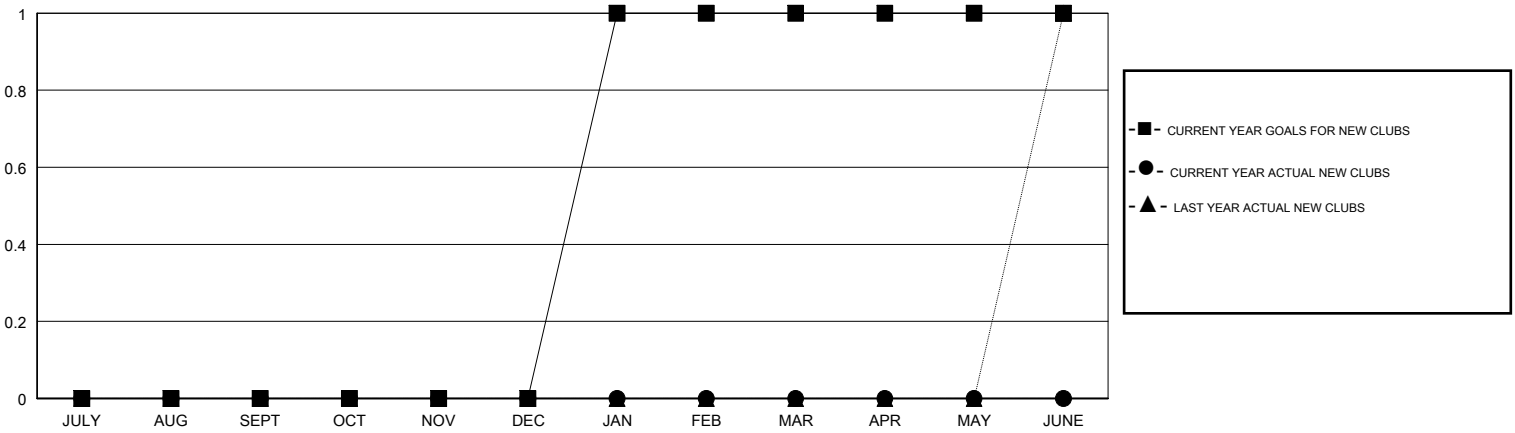
LOCATION MASSACHUSETTS

GMT CA

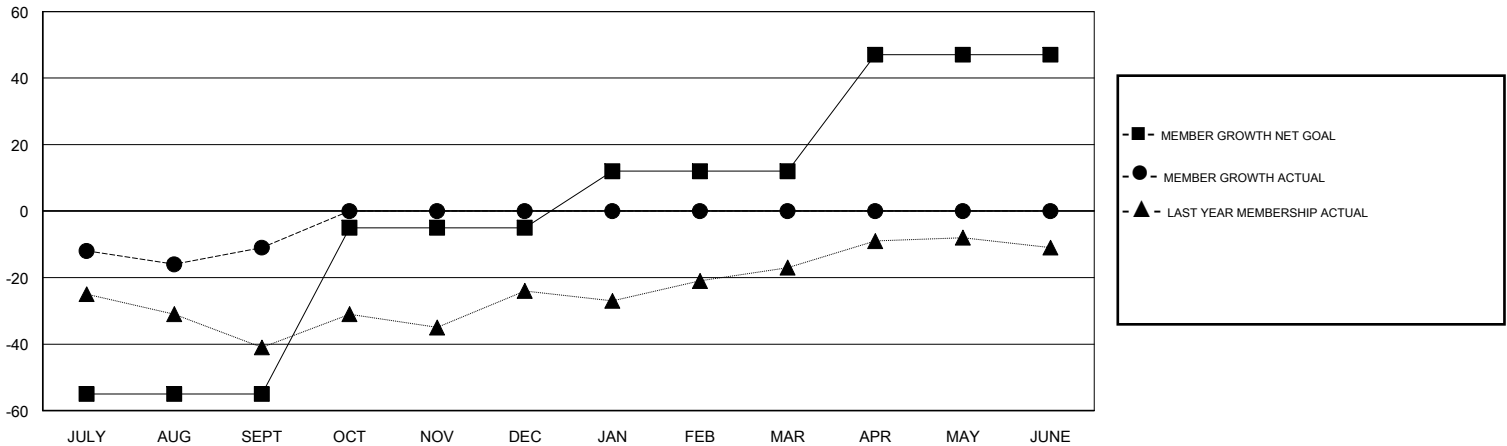
Clubs			
RESULTS FOR 2018-2019			
QUARTER	NEW CLUB GOAL	NEW CLUBS	DROPPED CLUBS
JULY/AUG/SEPT	0	0	0
OCT/NOV/DEC	0	0	0
JAN/FEB/MAR	1	0	0
APR/MAY/JUNE	0	0	0

Members			
RESULTS FOR 2018-2019			
QUARTER	MEMBER GROWTH NET GOAL	MEMBER GROWTH ACTUAL	DROPPED MEMBERS ACTUAL (including transfers)
JULY/AUG/SEPT	-55	31	39
OCT/NOV/DEC	50	0	0
JAN/FEB/MAR	17	0	0
APR/MAY/JUNE	35	0	0

GOALS AND ACTUAL NEW CLUBS CUMULATIVE



GOALS AND ACTUAL MEMBERS CUMULATIVE



DROPPED CLUBS: 0

12 CLUBS OF 48 ADDED 1 OR MORE NEW MEMBERS

GENDER DISTRIBUTION	
MALE	1,120 (65.19%)
FEMALE	598 (34.81%)
Women Percentage Fiscal Year Goal: 40%	

DROPPED MEMBERS	
DECEASED	8
CLUB CANCELLED	0
OTHER	31
TOTAL	39

[CLICK HERE FOR CUMULATIVE MEMBERSHIP DATA](#)

TOTAL FAMILY UNIT MEMBERS	228
FAMILY MEMBERS PAYING HALF DUES	117